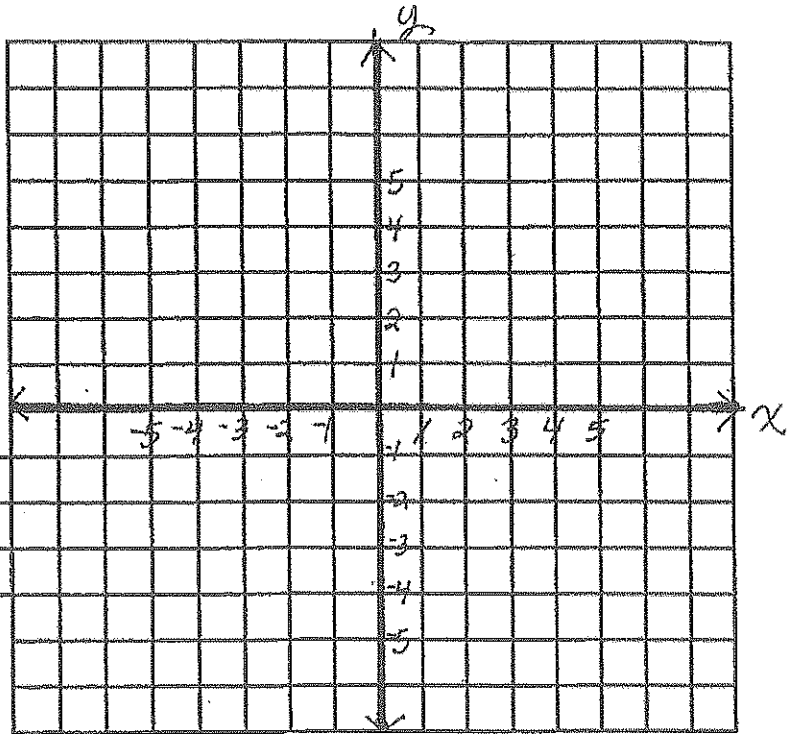


For each equation, complete the following:

- Complete the data table
- Graph the points
- Determine if the relationship is increasing or decreasing
- Find the y-intercept

$y = 1.5x$

-3	
-2	
-1	
0	
1	
2	
3	

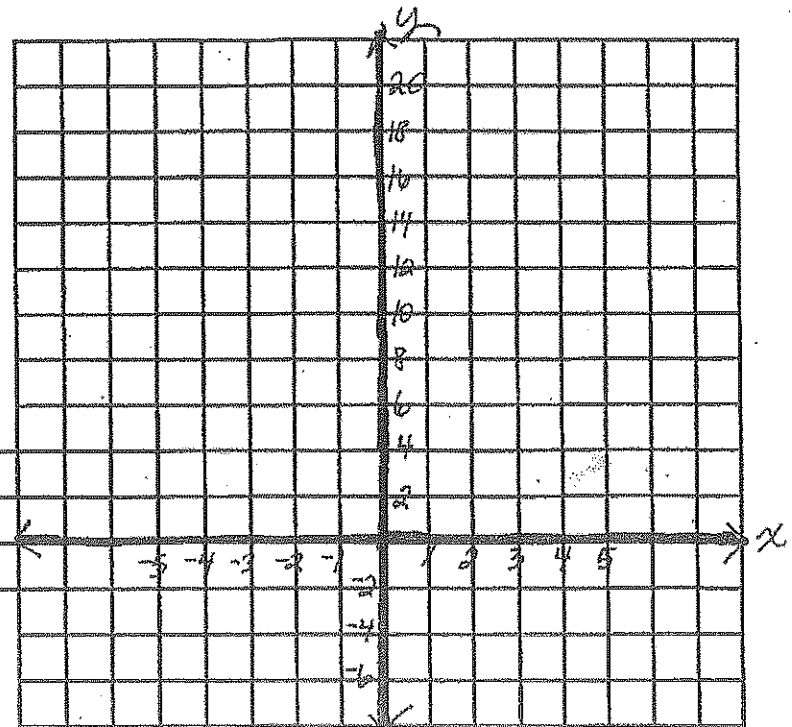


Increasing or Decreasing?

y-intercept (,)

$y = -3x + 10$

-3	
-2	
-1	
0	
1	
2	
3	

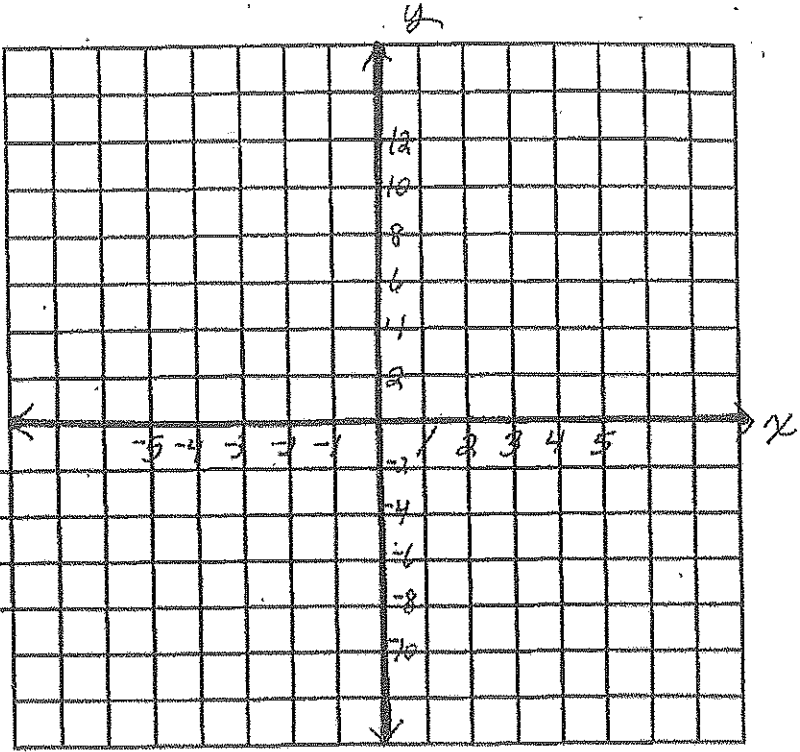


Increasing or Decreasing?

y-intercept (,)

$y = -2x + 6$

-3	
-2	
-1	
0	
1	
2	
3	

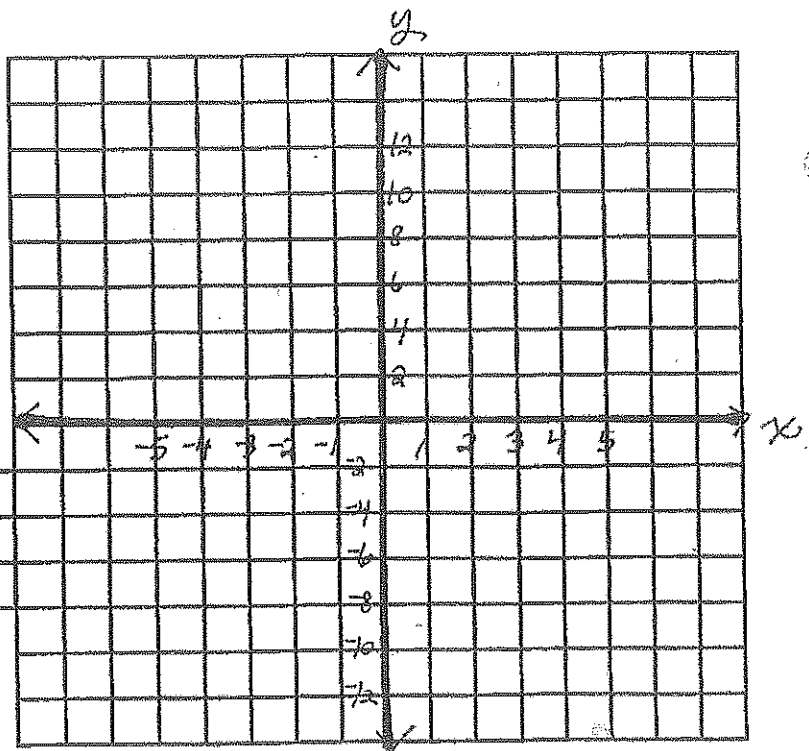


Increasing or Decreasing?

y-intercept (,)

$y = 2x + 5$

-3	
-2	
-1	
0	
1	
2	
3	



Increasing or Decreasing?

y-intercept (,)